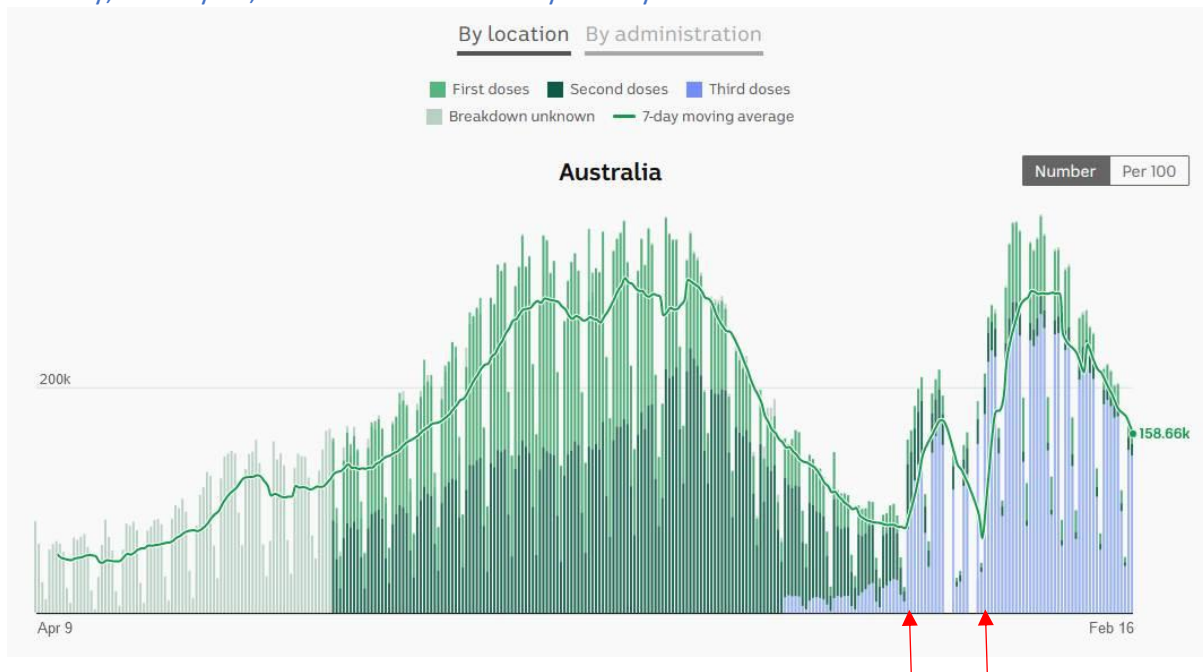
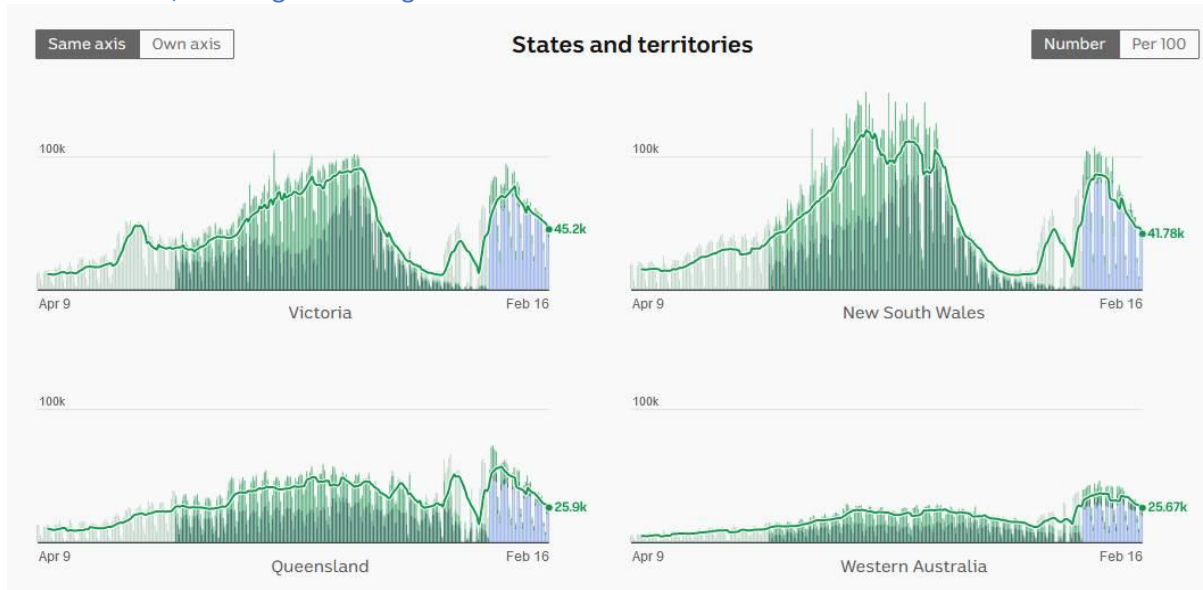


Research into the most recent spike in covid-19 cases is revealing a difficult to dismiss correlation between the booster rollout and a spike in covid 'cases', testing and hospitalisations.

Starting with data from <https://www.abc.net.au/news/2021-03-02/charting-australias-covid-vaccine-rollout/13197518>, the below graph shows vaccinations. You can see the low-activity days of the (long) weekends. The graph is listing figures as being the day after they occurred, i.e., they use the reporting date, not the vaccination date. Notice the significant spike in the 3rd dose (light blue), occurring on Tuesday, December 14th, 2021, which is actually Mon, December 13th. Then it goes relatively quiet again until the next spike on Wednesday, January 5th, 2022, which would actually be Tuesday, January 4th, after the New Year's Day holiday.



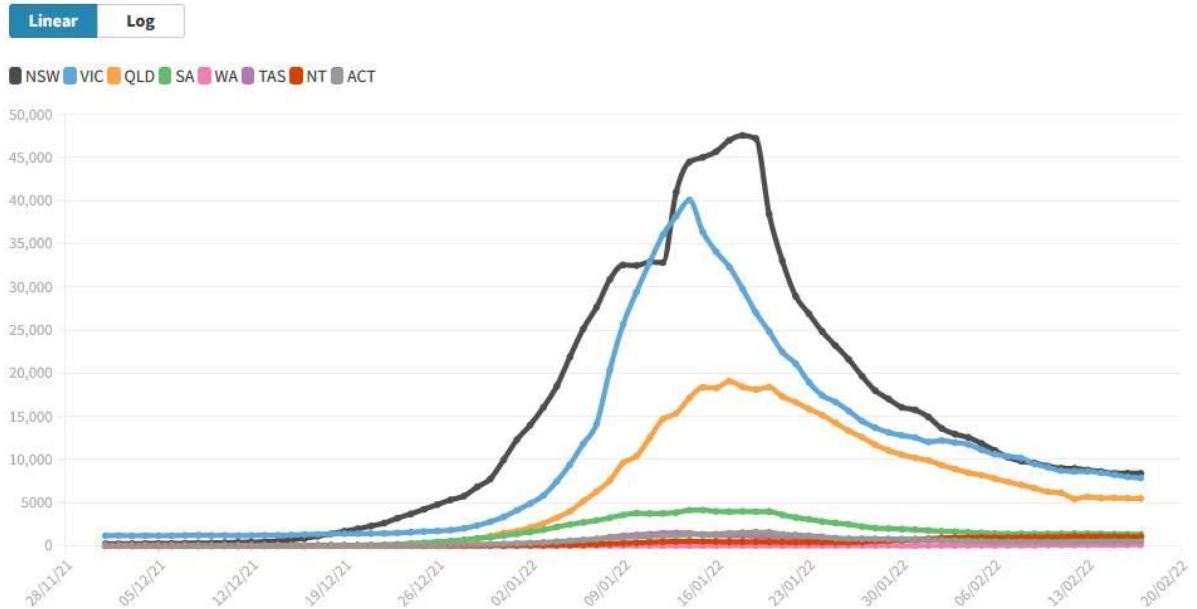
Now, for starters, I'd question if there are dodgy statistics manipulations going on here or if there is a reasonable explanation, but not one of the Australian states in the graphs below show boosters occurring prior to January 10th, and yet the graph above shows merged figures for all the states, with the booster occurring from November 9th, two months earlier. Given that over 13,000 doses were administered on November 9th, I would have thought it would be easy enough to state where they went. After all, we are given the figures for first and second doses on those dates in the various states.



Now, switching to graphs from <https://www.covid19data.com.au>, note below what happened to the covid case numbers at that time. Every state had been flat-lining up till mid-December. And then around the same day as the huge uptick in boosters (national figures), you see NSW's, ACT's, NT's and SA's covid case numbers start to slide upwards. Other states are a little slower off the mark to record significant and consistent increases.

New daily cases since December 1

Shows new daily cases as announced (PCR + RAT). Does not include retrospective revisions. 7-day average.



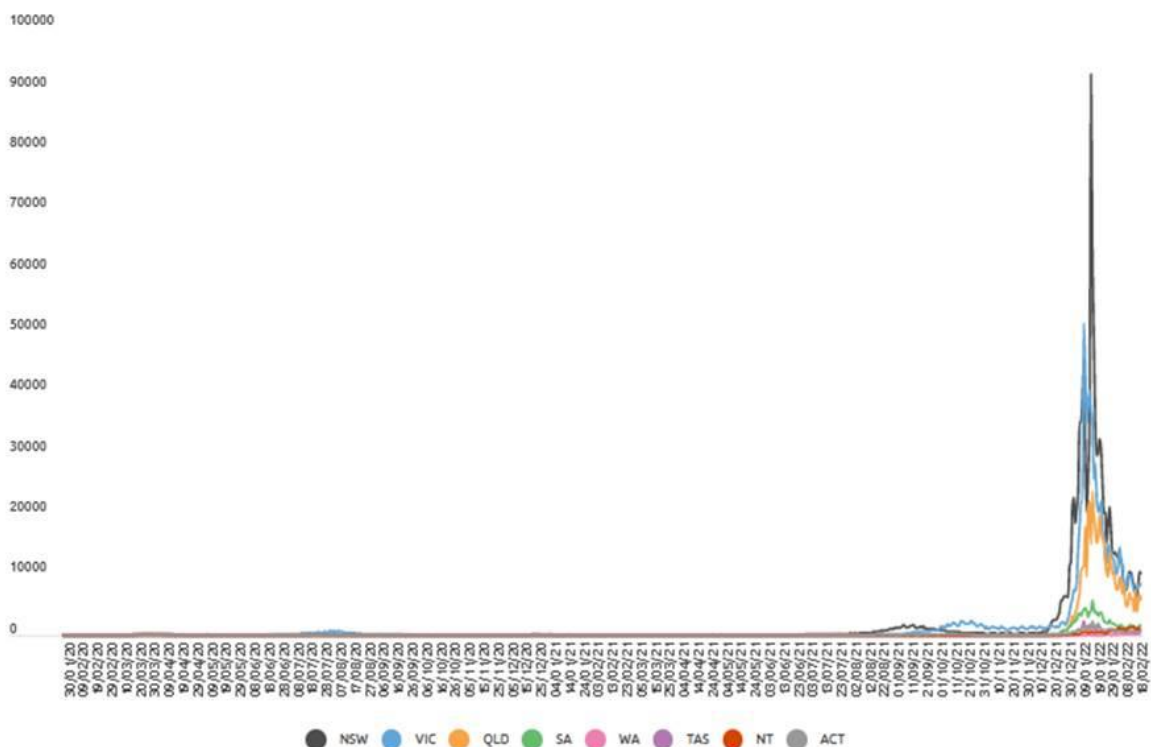
In the table below, you can clearly see that things went nuts around December 13th, depending on which state you are looking at. By December 15th most states had seen an increase in covid case numbers.

Date	NSW	VIC	QLD	SA	WA	TAS	NT	ACT
5/12/2021	286	980	6	6	0	0	0	6
6/12/2021	208	1073	3	4	0	0	3	6
7/12/2021	260	1185	1	4	0	0	0	3
8/12/2021	403	1312	2	3	0	0	2	8
9/12/2021	420	1232	0	7	1	0	3	4
10/12/2021	516	1206	9	8	0	0	4	6
11/12/2021	560	1193	1	7	0	0	1	11
12/12/2021	485	1069	1	10	0	0	3	1
13/12/2021	536	1290	10	13	1	0	17	3
14/12/2021	804	1189	4	12	1	0	2	4
15/12/2021	1360	1405	6	25	0	0	11	7
16/12/2021	1742	1622	22	24	0	1	1	11
17/12/2021	2213	1510	20	64	0	2	8	20
18/12/2021	2482	1504	31	73	0	1	1	18
19/12/2021	2566	1240	42	80	0	3	9	18
20/12/2021	2501	1302	59	105	0	3	3	13
21/12/2021	3057	1245	86	154	1	4	14	16
22/12/2021	3763	1503	186	198	4	12	5	58
23/12/2021	5715	2005	369	484	1	26	10	85
24/12/2021	5612	2095	589	688	2	27	10	102
25/12/2021	6288	2108	765	634	7	33	19	142
26/12/2021	6394	1608	714	774	2	56	12	71
27/12/2021	6324	1999	784	842	1	39	12	189
28/12/2021	6062	2738	1158	995	3	44	16	252
29/12/2021	11201	3767	1539	1471	2	58	19	138
30/12/2021	12226	5137	2222	1374	1	103	37	253
31/12/2021	21151	5919	3118	2093	5	137	60	462
1/01/2022	22577	7442	2266	2100	3	439	50	448
2/01/2022	18278	7172	3587	2298	7	404	95	506
3/01/2022	20794	8577	4249	2552	8	472	58	514
4/01/2022	23131	14020	5699	3246	14	705	75	926
5/01/2022	35054	17636	6781	3493	16	867	117	810
6/01/2022	34994	21997	10332	3070	9	751	256	992
7/01/2022	38625	21728	10953	3707	6	1489	412	1246
8/01/2022	45098	51356	11174	4274	8	2223	594	1305

Below is the longer-term view which shows that something went drastically wrong in December 2021. RATs became somewhat available in January, but the government was begging us, back in December, to stay away from PCR testing stations unless we had a compelling reason, because too many people were being tested and overwhelming the system. Yeh, I'd say that too if I were trying to hide an inconvenient truth. And you could argue that the government made RATs difficult to get hold of in January, given that they knew months before that they would be switching to RATs.

State and territory breakdowns of new daily confirmed COVID-19 cases in Australia

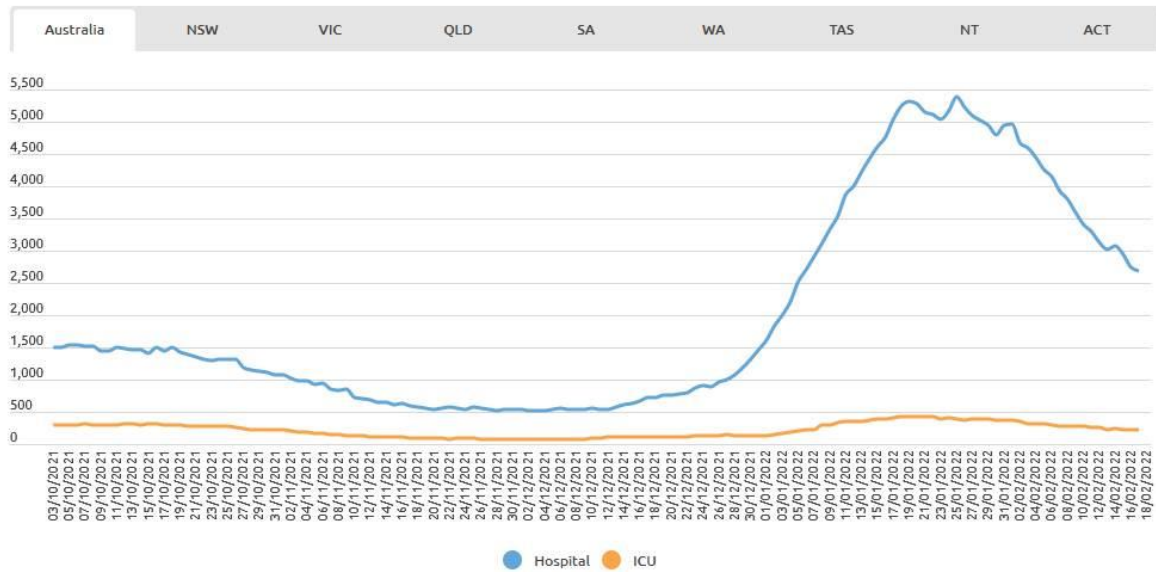
Tip: Click or tap the circles in the legend below to deselect states and territories. Viewing regions alone gives a clearer picture of each.



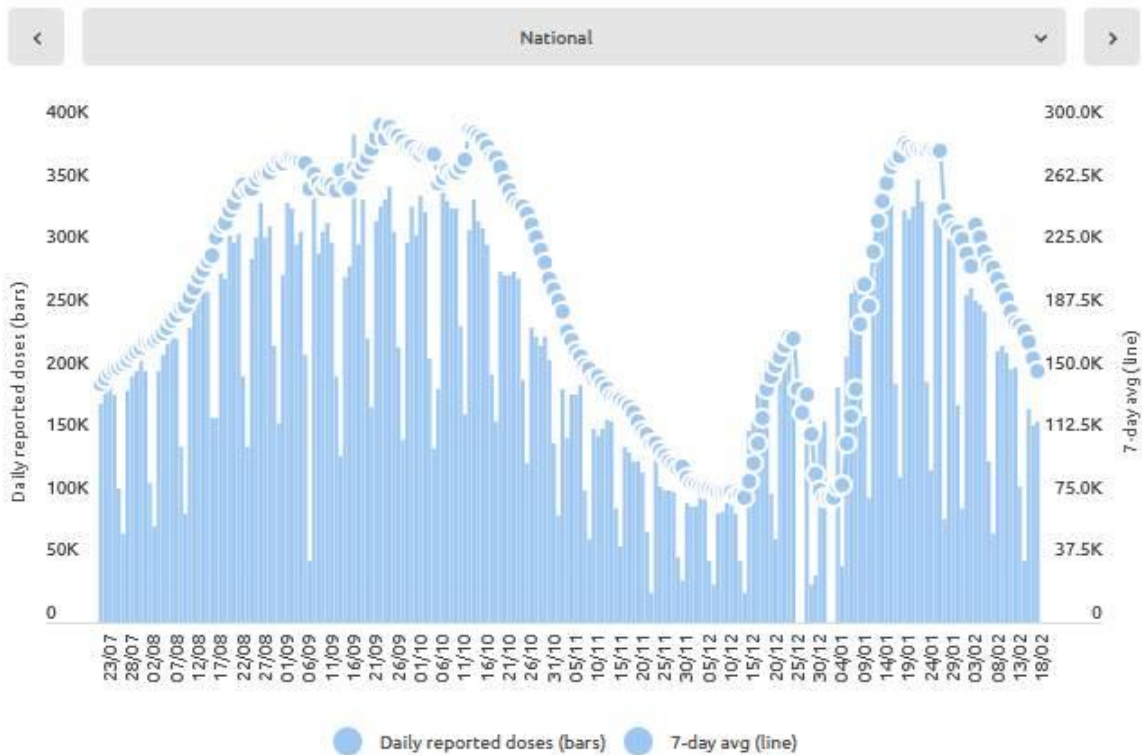
Below we see the increase in hospitalisations which started to increase on December 13th, 2021. It matches the dates and pattern of the boosters on the vaccinations graph and the cases graph. We're being told that this is the omicron strain which is less severe. And all the reports I am hearing is that people are only getting a sniffle and sore throat. So why are people being hospitalised for a mild variant?

Hospitalisations and ICU in Australia

Tip: Click the circles in the legend below to deselect hospital and see ICU more clearly.



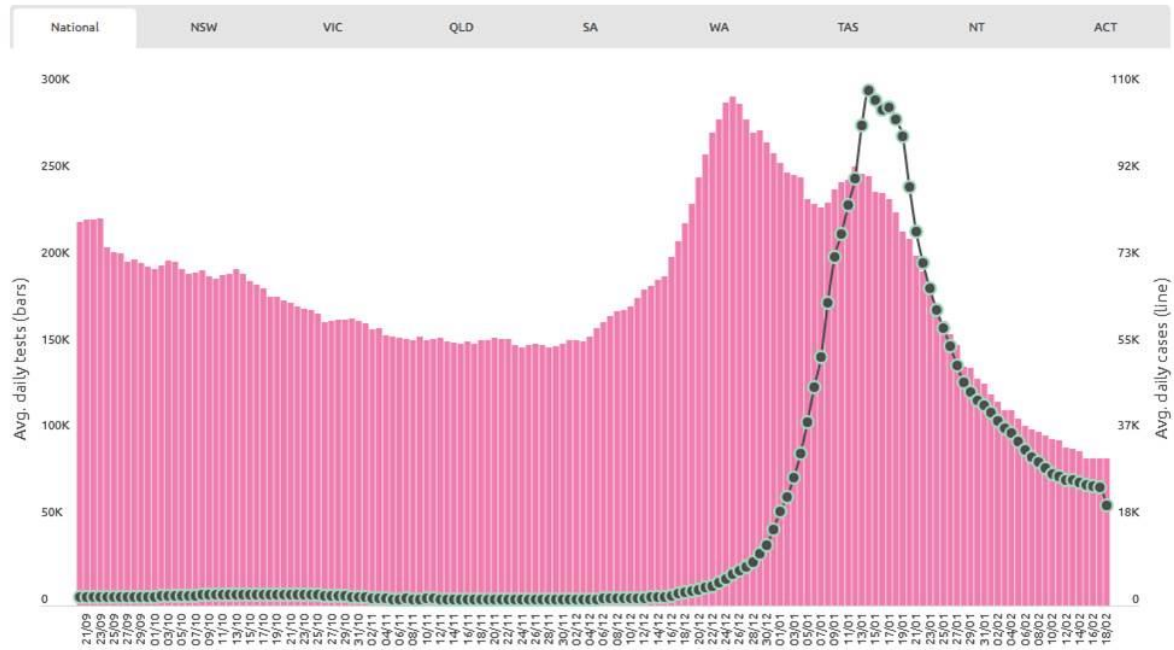
Daily reports of COVID-19 vaccinations (use tabs or dropdown)



[Download data](#)

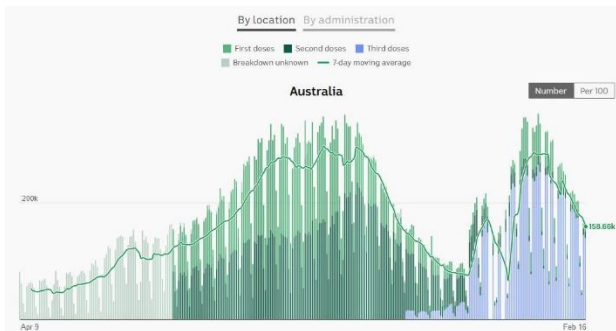
The above charts are perhaps confounded by the RAT & PCR testing increasing, but I believe a large contributor to the increased testing was people feeling ill (from the booster) and either voluntarily or compulsorily (by the hospital they presented at) being tested.

Average daily PCR tests vs average daily cases in all jurisdictions (use dropdown or tabs)

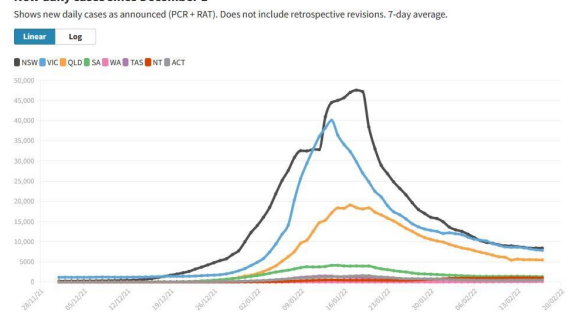


For those who don't want to be convinced, the above charts are probably not compelling enough for them. But I find it quite suspicious that the day they start vaccinating people in huge numbers with the 3rd dose, we see a correlating case and hospitalisation pattern.

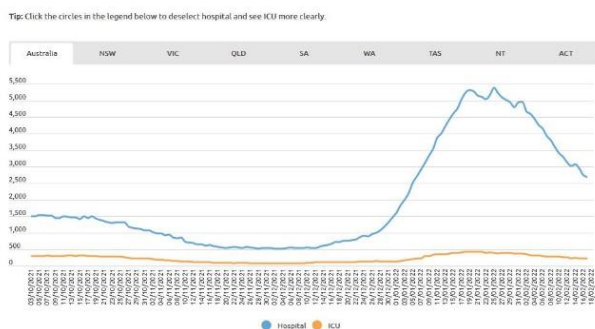
Side by side view of relevant charts



New daily cases since December 1



Hospitalisations and ICU in Australia



Average daily PCR tests vs average daily cases in all jurisdictions (use dropdown or tabs)

